



VIVIX™
by FORMICA GROUP

A FRESH PERSPECTIVE IN ARCHITECTURAL PANELS


For nearly a century, Formica® brand surfacing solutions have defined the look and performance of modern interiors worldwide. Now, building on fifteen years of exterior cladding success in European markets, Formica Group remains on the cutting edge of building envelope art and science with the innovative exterior lightweight cladding solution that redefines the landscape of contemporary construction for both new builds and renovations of existing structures's skins.





MODERN



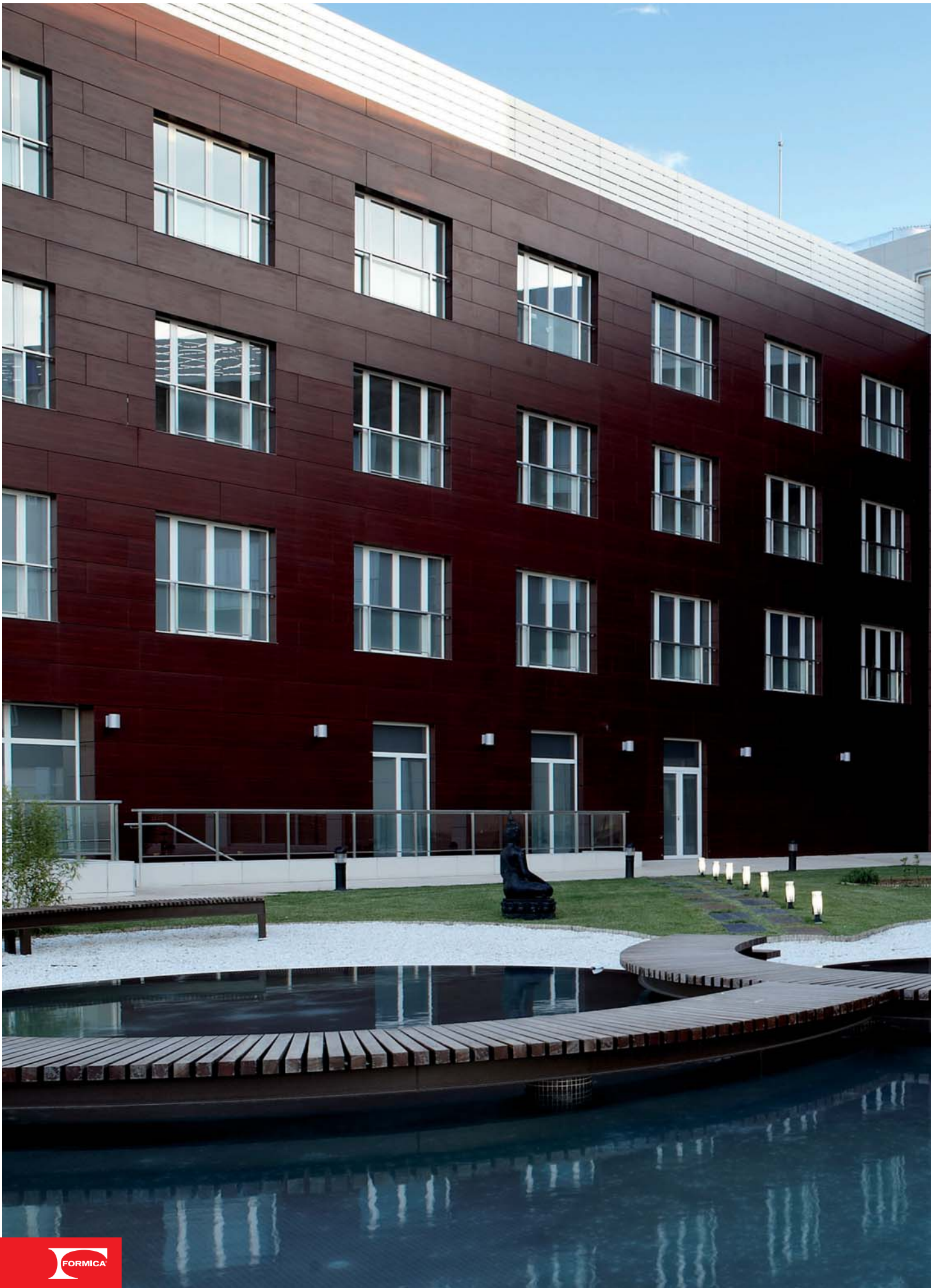


K1238
Carnaval

EXTERIOR ARCHITECTURAL PANELS

VIVIX[™] by Formica Group is a solid phenolic engineered façade panel with a decorative surface on both sides. Robust and resilient, these rigid homogenous panels are manufactured using tough thermosetting resins reinforced with cellulose fiber for added strength and durability. The panels are highly resistant to impact, abrasion and weather.

- Available in an array of colours and patterns attuned to contemporary architecture and design, *VIVIX*[™] panels are easily machined and cut into a variety of shapes and sizes to express virtually any design concept.
- They can be field modified as needed (large-scale field modifications are not recommended).
- *VIVIX*[™] panels are also easy to maintain and in most cases, can simply be cleaned with mild detergent and water.





K1040
Alpino

F0905
Mahogany

SMART



VERSATILE

VVIX™ panels can enhance the look, function and life span of office buildings, hospitals and clinics, schools and universities, transportation centres, industrial buildings, cultural and sports facilities and residential buildings. The unique attributes of the VVIX™ panels allow for a variety of exterior applications including rainscreen decorative façades and singular elements, such as balconies, soffits, signage and other architectural features.

TOUGH



K2010
Malibu





THE RAINSCREEN PRINCIPLE AND CLADDING PERFORMANCE


Rainscreen construction manages moisture, acting as a defense against water penetration and aiding in preventing adverse effects of moisture on building finishes and structural components.

A rainscreen ventilated façade system incorporates:

- cladding,
- an air cavity,
- drainage plane, and
- an airtight support wall,

that together offer multiple moisture shedding pathways.

The continuous circulation of air in the cavity between the inner structure and the outer cladding skin helps moisture to evaporate and keeps the building dry and well-insulated, greatly minimizing the possible development of mold and mildew.

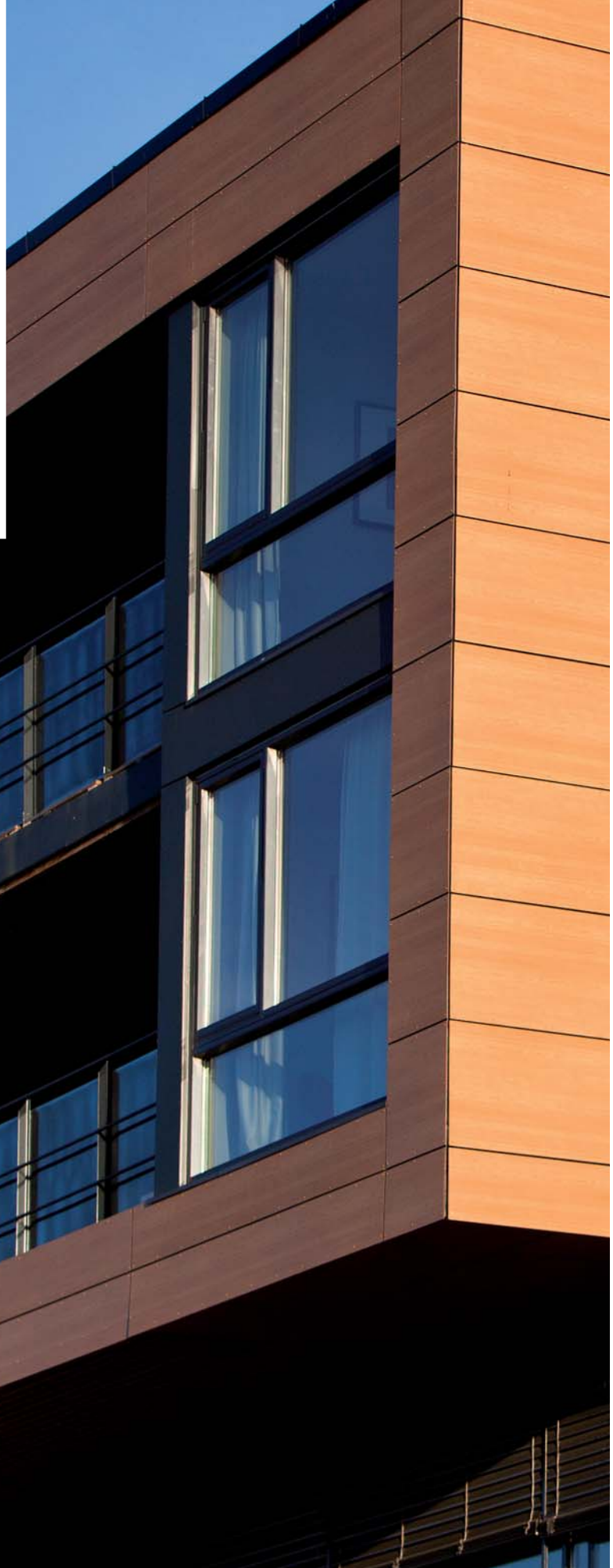
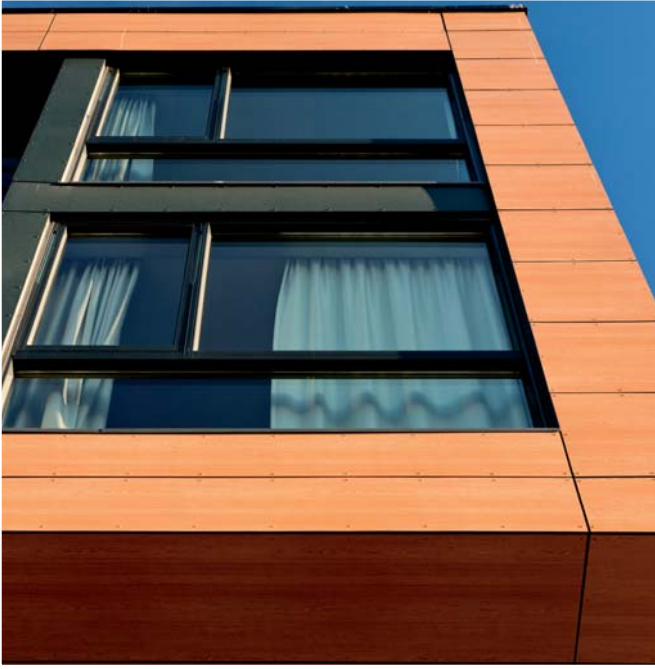


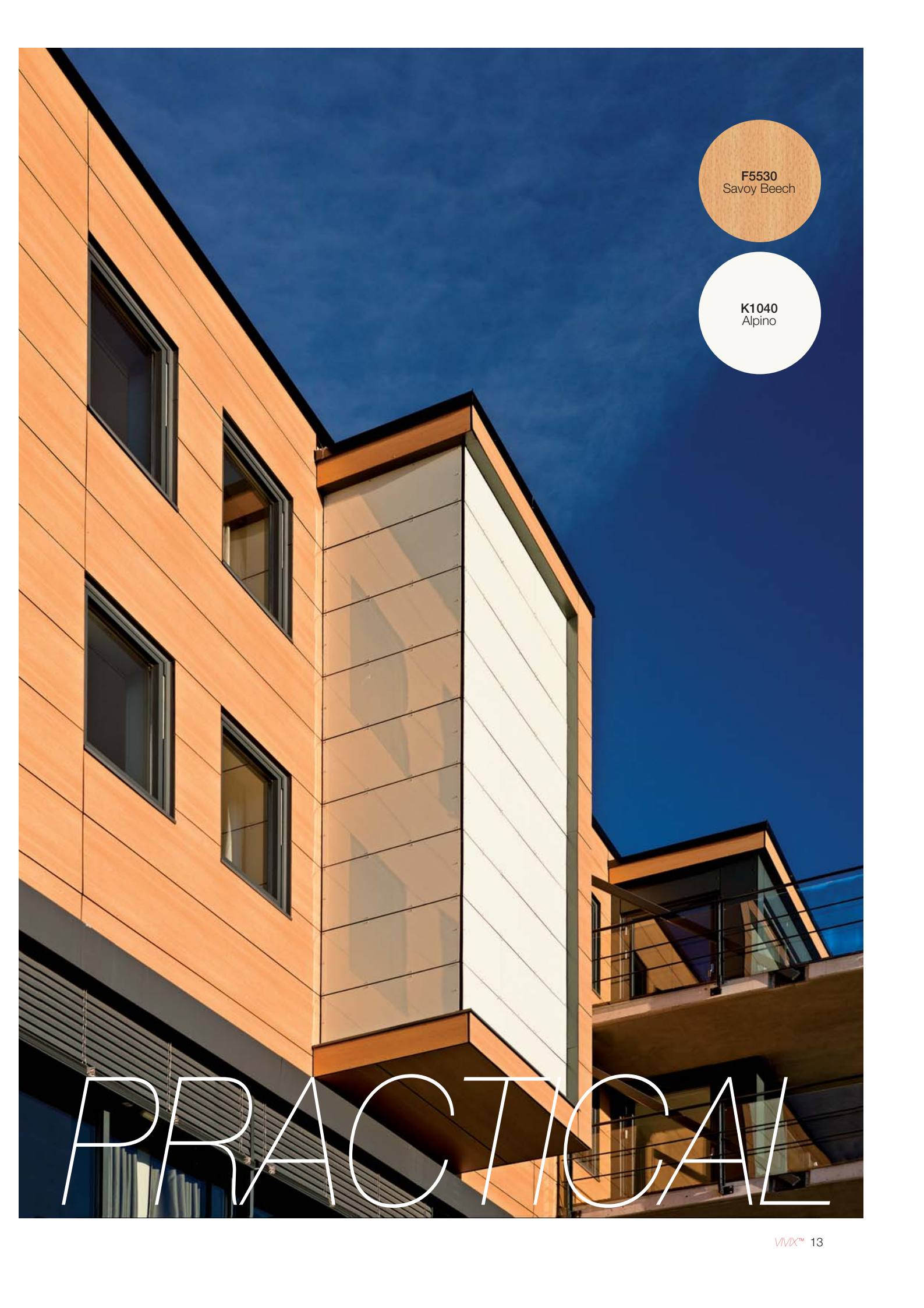
F7851
Spectrum Blue

F2302
Doeskin

F7940
Spectrum Yellow

FRESH





F5530
Savoy Beech

K1040
Alpino

PRACTICAL



AREC



SUSTAINABILITY THROUGH DURABILITY

VIVIX™ panels incorporate Formica Group's commitment to sustainable principles and practices. VIVIX™ panels are manufactured in Europe with minimal environmental impact as determined by Formica Group's product Life Cycle Assessment (LCA).

LCA tracks the ecological effects of a product throughout its lifespan from raw material procurement, manufacture and transport, to its use, reuse, recycling and disposal. A full VIVIX™ LCA is available upon request.

VIVIX™ Environmentally Responsible Attributes:

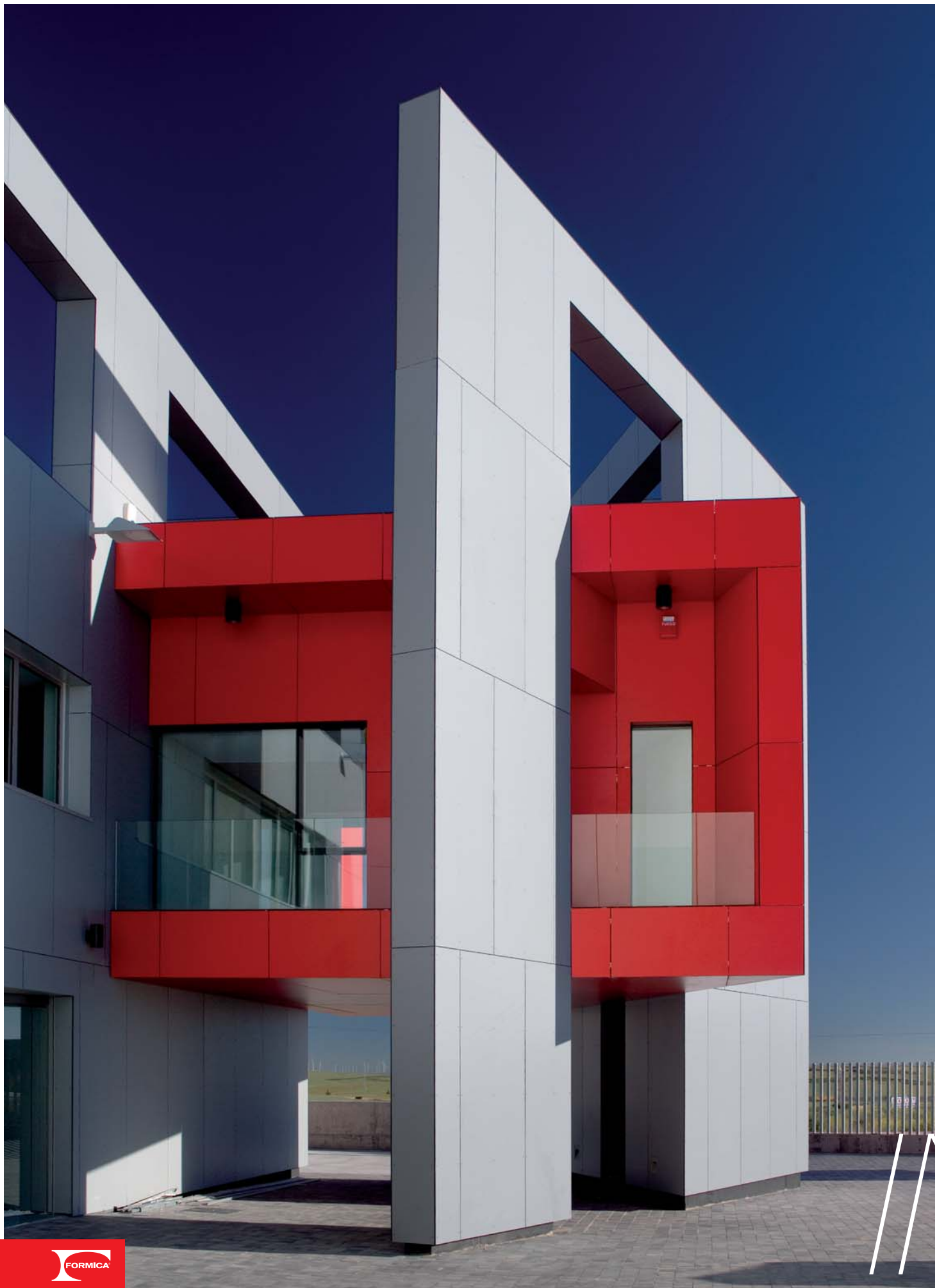
- Contains 3% of pre-consumer recycled wood fiber content (ISO 14021).
- Certified low-emitting by GreenGuard Environmental Institute.
- Wood fibers used in the manufacturing process come from responsibly managed forests. Formica Group has achieved FSC Chain of Custody Certification in high pressure decorative laminates through Scientific Certification Systems (SCS), an independent third-party certifier of environmental and sustainability claims.
- Selected color pigments are free of heavy metals and solvents.
- Multiple panel sizes optimize yield and minimize fabrication waste.
- In support of green buildings and resource conservation, Formica Group provides customers with relevant information about our products.
- Used in rainscreen construction, VIVIX™ panels contribute to a building's thermal efficiency.
- Manufactured in Europe, use of VIVIX™ panels may contribute toward regional material credits as outlined in Leed reference for green building design and construction.
- May contribute toward optimized building energy performance and moisture regulation.

K1998
Oslo

F7967
Hunter Green

F2966
Opal

RESPONSIBLE





K3735
Krypton

K1238
Carnaval

INNOVATIVE





F3007
Pale Olive

F5511
Vosges Pear

JOYFUL



K2010
Malibu

INTEGRATED

COLOURS

Developed in cooperation with leading architects and colour consultants, *VIVIX*[™] panel range choices include:

- plain colours in sophisticated hues,
- nature-inspired abstract patterns
- rich woodgrains

that allow the designer to create

- a unique building identity,
- accent architectural elements or,
- by selecting lighter colours, enhance building energy efficiency by reducing sunlight heat gain.

All colours have undergone rigorous testing to ensure UV stability in accordance with ISO 105-A02:1993 Tests for Colour Fastness - Part A02: Grey Scale for Assessing Change in Colour.





F7940
Spectrum Yellow

F6901
Vibrant Green

OUTRAGE





F3007
Pale olive

F7967
Hunter Green

DURABLE



BALCONIES



FENCES



WINDOWS - FAÇADES



HOTELS



INDUSTRIAL



SCHOOLS



HOSPITALS



OFFICES

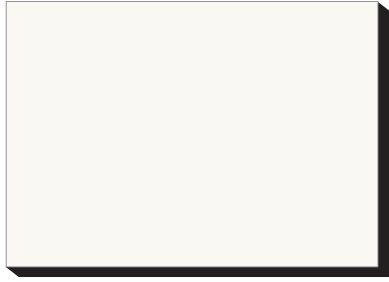
APPLICATIONS



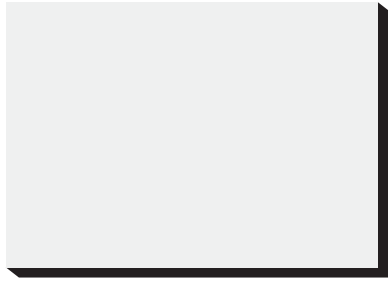
TRANSPORT



HOUSING



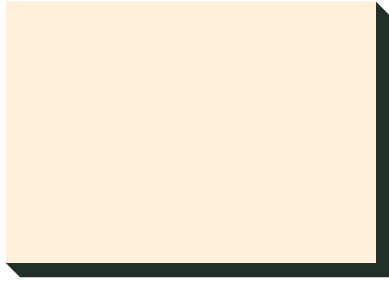
K1040
Alpino Matte 58



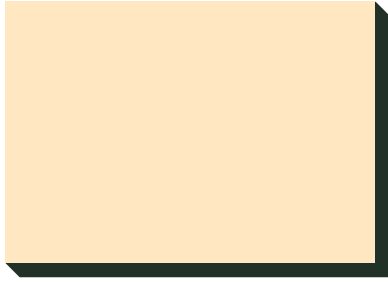
K2010
Malibu Matte 58



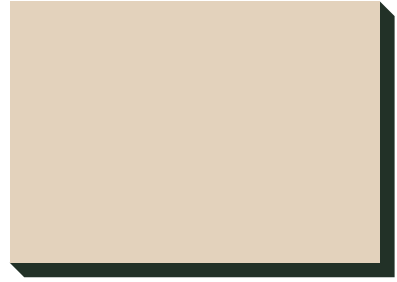
F7927
Folkestone Matte 58



K1181
Irish Cream Matte 58



K1301
Gobi Matte 58



F2833
Sandstone Matte 58



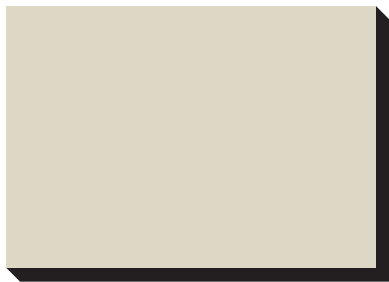
F2288
Peach Matte 58



K1902
Eldorado Matte 58



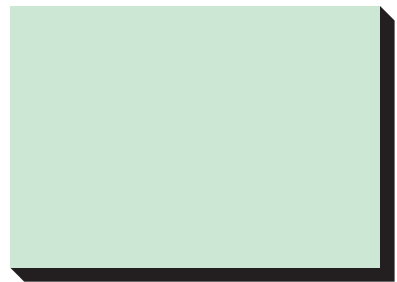
K1903
Cafe Matte 58



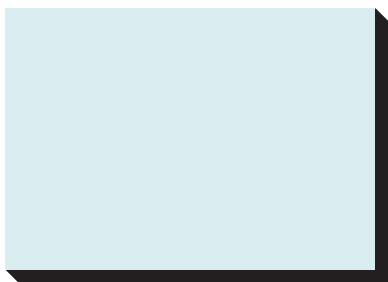
F7858
Pumice Matte 58



F7940
Spectrum Yellow Matte 58



F2966
Opal Matte 58



F5493
Arctic Blue Matte 58



K1998
Oslo Matte 58



F7853
Ocean Grey

Matte 58



K2020
Tornado

Matte 58



F7912
Storm

Matte 58



F2302
Doeskin

Matte 58



K1834
Kashmir

Matte 58



F2200
Dark Chocolate

Matte 58



F4161
Terracotta

Matte 58



K1238
Carnaval

Matte 58



K2005
Paprika

Matte 58



F3007
Pale Olive

Matte 58



F6901
Vibrant Green

Matte 58



F7967
Hunter Green

Matte 58



F7884
China Blue

Matte 58



F7851
Spectrum Blue

Matte 58



F7969
Navy Blue

Matte 58



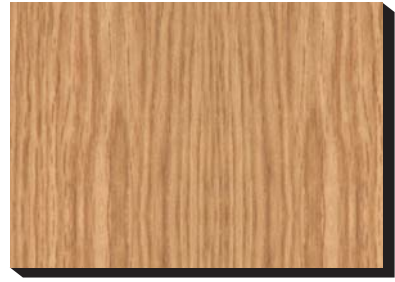
F3855
Clear Maple

Matte 58



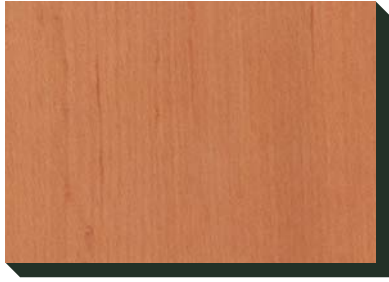
F5530
Savoy Beech

Matte 58



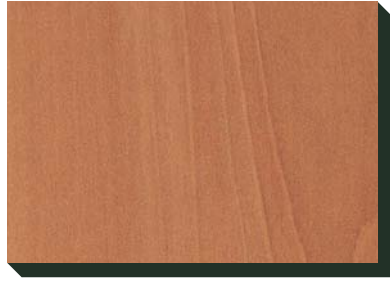
F2510
Golden Morning Oak

Matte 58



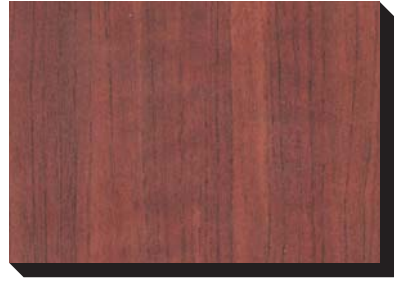
F5532
Erable Whisky

Matte 58



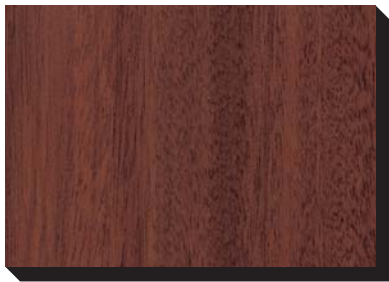
F5511
Vosges Pear

Matte 58



F5513
Redwood

Matte 58



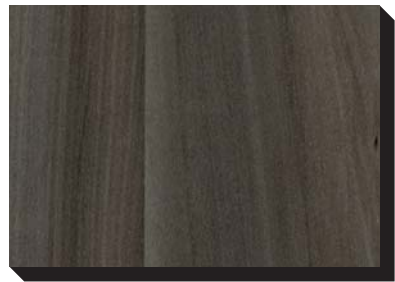
F0905
Mahogany

Matte 58



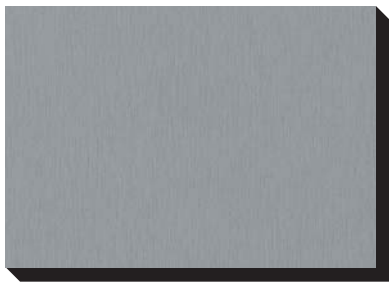
F1614
Punga Punga Wood

Matte 58



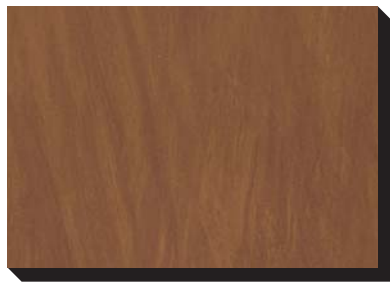
F5488
Smoky Brown Pear

Matte 58



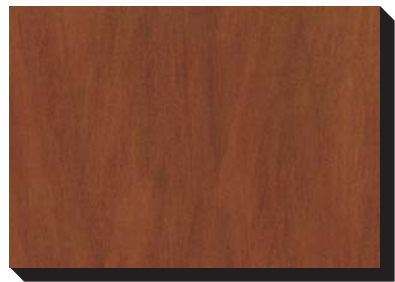
K3735
Krypton

Matte 58



F1155
Marrón

Matte 58



F0163
Fantasía Marrón

Matte 58



K3734
Radon

Matte 58

Numerical listing

	Code	Name	Range	NCS	RAL	Finish
	F0163	Fantasia Marron	Patterns			Matte 58
	F0905	Mahogany	Woods			Matte 58
	K1040	Alpino	Colors	S 0502-G50Y	9010	Matte 58
	F1155	Marron	Patterns			Matte 58
	F1614	Punga Punga Wood	Woods			Matte 58
	K1181	Irish Cream	Colors	S 1005-Y50R		Matte 58
	K1238	Carnaval	Colors	S 1580-Y90R	3001	Matte 58
	K1301	Gobi	Colors	S 1010-Y30R		Matte 58
	K1834	Kashmir	Colors	S 5010-Y30R		Matte 58
	K1902	Eldorado	Colors	S 1020-Y20R	1014	Matte 58
	K1903	Café	Colors	S 3020-Y20R		Matte 58
	K1998	Oslo	Colors	S 3020-B		Matte 58
	K2005	Paprika	Colors	S 4050-Y80R		Matte 58
	K2010	Malibu	Colors	S 1000-N		Matte 58
	K2020	Tornado	Colors	S 4500-N	7036	Matte 58
	F2200	Dark Chocolate	Colors	S 8005-Y80R	8017	Matte 58
	F2288	Peach	Colors	S 1515-Y40R		Matte 58
	F2302	Doeskin	Colors	S 2010-Y		Matte 58
	F2510	Golden Morning Oak	Woods			Matte 58
	F2833	Sandstone	Colors	S 2010-Y30R		Matte 58
	F2966	Opal	Colors	S 1010-G10Y		Matte 58
	F3007	Pale Olive	Colors	S 3020-G60Y		Matte 58
	K3734	Radon	Patterns			Matte 58
	K3735	Krypton	Patterns			Matte 58
	F3855	Clear Maple	Woods			Matte 58
	F4161	Terracotta	Colors	S 3040-Y60R		Matte 58
	F5488	Smoky Brown Pear	Woods			Matte 58
	F5493	Arctic Blue	Colors	S 0510-R90B		Matte 58
	F5511	Vosges Pear	Woods			Matte 58
	F5513	Redwood	Woods			Matte 58
	F5530	Savoy Beech	Woods			Matte 58
	F5532	Erable Whisky	Woods			Matte 58
	F6901	Vibrant Green	Colors	S 2060-G30Y	6018	Matte 58
	F7851	Spectrum Blue	Colors	S 3060-R80B		Matte 58
	F7853	Ocean Grey	Colors	S 3010-G20Y		Matte 58
	F7858	Pumice	Colors	S 2005-Y20R		Matte 58
	F7884	China Blue	Colors	S 3020-R90B		Matte 58
	F7912	Storm	Colors	S 6502-B	7015	Matte 58
	F7927	Folkestone	Colors	S 2500-N		Matte 58
	F7940	Spectrum Yellow	Colors	S 1070-Y10R	1023	Matte 58
	F7967	Hunter Green	Colors	S 7020-G	6005	Matte 58
	F7969	Navy Blue	Colors	S 7020-R80B	5013	Matte 58

Panel Sizes (mm)	Grades (EN 438-6)	Thicknesses (mm)
2150 x 0950	EDS	4,5
2150 x 1300	EDF	6
2440 x 1300		8
3050 x 1300		10
3660 x 1525		



© Property of and used on licence from the Scandinavian Color Institute AB, SCI-Sweden, Stockholm 2011.